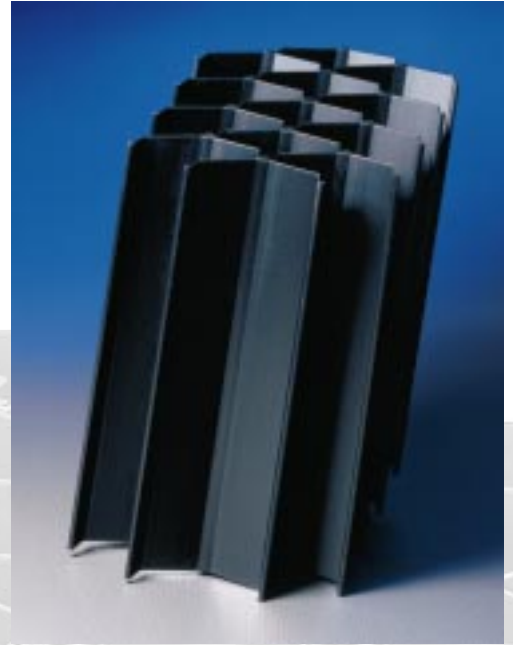


Lamella clarifier

SETTLE PACK®



- ✓ High projected surface area
- ✓ Polypropylene
- ✓ Modular system will fit the different tanks geometry very easily
- ✓ Robust will sustain foot traffic
- ✓ Angle variable
- ✓ Simple assembly

2 H-GROUP



2H aqua GmbH

SETTLE PACK® lamella clarifiers

for solids segregation

Type	SKP 2.45	SKP 2.85
Distance of lamellas (average):	45 mm	85 mm
Height of lamella blocks:	– up to 5 m –	
Thickness of lamellas:	– approx. 2 mm –	
Material:	– Polypropylene –	
max. service temperature:	80 °C (100 °C on request)	
proj. sedimentation area (angle of 60°)	11 m ² /m ³	> 6 m ² / m ³
Weight of lamellas (dry)	approx. 70 kg/m ³	approx. 60 kg/ m ³

Fields of application:

- drinking water purification
- surface water treatment
- municipal and industrial wastewater treatment
 - primary
 - aeration (increase of biomass conc.)
 - sedimentation tanks
 - flocculation/precipitation
- solid / liquid separation



- cutting to fit circular vessels is possible
- can be produced on the job site without loss of quality
- 2 H will give recommendations for the support system

Your contact adress:

2 H-GROUP



2H aqua GmbH

Dieselweg 5
 D-48493 Wettringen
 Telefon +49 (0) 25 57 / 93 90-0
 Telefax +49 (0) 25 57 / 93 90-49
 Internet: www.2haqua.com
 E-Mail: info@2haqua.com